

Scaled data based on original data using

LM-41-14 Approved Method for Photometric Testing Of Indoor Fluorescent Luminaires

Test Report Prepared for

Cooper Lighting Solutions

(formerly Eaton)

Brand: CORELITE

Report Number: ITL68837

Luminaire Tested: **I2-WL-2N5-1C-UNV-AC48-T1-4-SNL6**

Issue Date: 3/3/2020

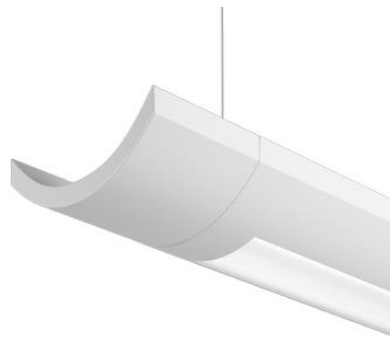
**Test Information**

Test Method: LM-41-14  
Report Number: ITL68837  
Test Lab: INDEPENDENT TESTING LABORATORIES, INC.  
Issue Date: 3/3/2020  
Manufacturer: COOPER LIGHTING SOLUTIONS (FORMERLY EATON)  
Product Line: CORELITE  
Catalog Number: I2-WL-2N5-1C-UNV-AC48-T1-4-SNL6  
Description: FABRICATED WHITE PAINTED METAL HOUSING, FABRICATED WHITE PAINTED METAL BALLAST COVERS/REFLECTORS, EXTRUDED FROSTED LINEAR PRISMATIC PLASTIC LENS BELOW LAMP, LENS PRISMS UP AND PARALLEL WITH LAMPS, LENS FROSTED BOTH SIDES. ONE U-SHAPED 2-PIECE FORMED WHITE PAINTED METAL REFLECTOR ABOVE LAMPS WITH 36 ADJUSTABLE SLOTS ON TOP AND SIDES, ADJUSTABLE REFLECTOR SET TO "DL6" FOR THIS TEST.  
Light Source: TWO 28-WATT T-5 SYLVANIA FP28/841/ECO LINEAR FLUORESCENTS.  
Ballast/Driver: UNIVERSAL B228PUNV-C

**Summary**

Lumens per Lamp: 2600 (2 lamps)  
Luminaire Lumens: 4248.4 lumens  
Efficiency: 81.7%  
Efficacy: 66.7 lumens/watt  
Spacing Criteria (0/90/45): 1.2 / 1.22 / 1.32  
Luminous Opening: Rectangular w/ Sides (W: 0.33' x L: 3.65' x H: 0.02')  
CIE Type: Semi-Direct

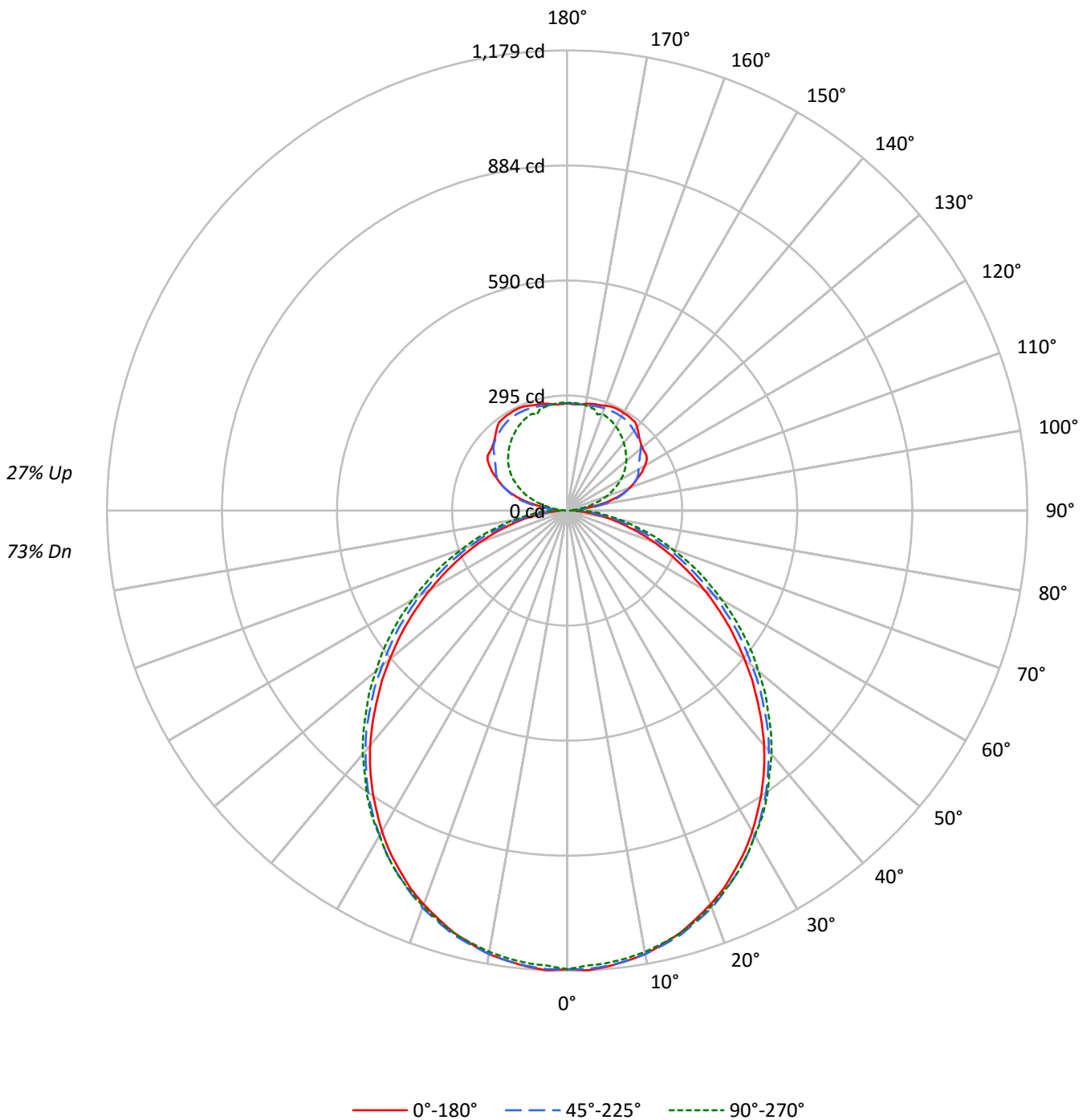
Input Watts (W): 63.7  
Input Voltage (V): NR  
Input Current (A<sub>in</sub>): NR  
Voltage Rise (V): NR  
Power Factor: NR  
Total Harmonic Distortion (THDi): NR  
Frequency (hertz): 60  
Stabilization Time: NR  
Operation Time: NR  
Ambient Temperature (°C): NR  
Test Distance: 25 FT



TEST NUMBER: ITL68837

CATALOG NUMBER: I2-WL-2N5-1C-UNV-AC48-T1-4-SNL6

### Luminous Intensity Polar Plot





TEST NUMBER: ITL68837

CATALOG NUMBER: I2-WL-2N5-1C-UNV-AC48-T1-4-SNL6

**COEFFICIENT OF UTILIZATION - ZONAL CAVITY METHOD:**

RF	20				20				20				20				20	
RC	80				70				50				30				10	0
RW	70	50	30	10	70	50	30	10	50	30	10	50	30	10	50	30	10	0
RCR																		
0	92	92	92	92	87	87	87	87	78	78	78	70	70	70	63	63	63	59
1	84	80	77	74	79	76	73	71	69	66	64	62	60	58	55	54	53	50
2	76	70	65	60	72	67	62	58	60	57	53	54	51	49	49	47	45	42
3	70	62	55	50	66	59	53	49	53	49	45	48	44	41	43	40	38	35
4	64	55	48	43	60	52	46	41	47	42	38	43	39	36	39	35	33	30
5	59	49	42	37	56	47	40	36	42	37	33	39	34	31	35	31	29	26
6	54	44	37	32	51	42	36	31	38	33	29	35	31	27	32	28	25	23
7	50	40	33	28	48	38	32	27	35	30	26	32	27	24	29	25	22	21
8	47	36	30	25	44	35	29	24	32	27	23	29	25	22	27	23	20	18
9	44	33	27	23	41	32	26	22	29	24	21	27	23	19	25	21	18	17
10	41	31	24	20	39	29	24	20	27	22	19	25	21	18	23	19	17	15

**AVERAGE LUMINANCE (cd/sqm):**

	0°	45°	90°
0°	10557	10557	10557
5°	10576	10528	10455
10°	10521	10461	10387
15°	10406	10363	10296
20°	10253	10219	10141
25°	10052	10010	9970
30°	9822	9763	9714
35°	9525	9496	9479
40°	9174	9148	9192
45°	8718	8739	8830
50°	8247	8276	8452
55°	7769	7859	8067
60°	7224	7367	7603
65°	6678	6800	7176
70°	6154	6276	6598
75°	5535	5618	6102
80°	5153	5139	5663
85°	4521	4575	5607



TEST NUMBER: ITL68837

CATALOG NUMBER: I2-WL-2N5-1C-UNV-AC48-T1-4-SNL6

**ZONAL LUMENS:**

Zone	Lumens	% Fixture	% Lamp
0°-10°	111.1	2.6	2.1
10°-20°	316.3	7.4	6.1
20°-30°	472.0	11.1	9.1
30°-40°	553.2	13.0	10.6
40°-50°	549.7	12.9	10.6
50°-60°	471.7	11.1	9.1
60°-70°	343.6	8.1	6.6
70°-80°	199.7	4.7	3.8
80°-90°	73.6	1.7	1.4
90°-100°	49.7	1.2	1.0
100°-110°	131.5	3.1	2.5
110°-120°	182.8	4.3	3.5
120°-130°	199.2	4.7	3.8
130°-140°	192.9	4.5	3.7
140°-150°	168.9	4.0	3.2
150°-160°	128.0	3.0	2.5
160°-170°	78.2	1.8	1.5
170°-180°	26.2	0.6	0.5
0°-30°	899.3	21.2	17.3
0°-40°	1452.5	34.2	27.9
0°-60°	2473.9	58.2	47.6
0°-90°	3090.9	72.8	59.4
90°-120°	364.0	8.6	7.0
90°-150°	925.0	21.8	17.8
90°-180°	1157.0	27.2	22.3
0°-180°	4248.4	100.0	81.7

**CANDELA DISTRIBUTION:**

	0°	22.5°	45°	67.5°	90°	Flux
0°	1175	1175	1175	1175	1175	
5°	1173	1173	1171	1165	1164	111
15°	1120	1123	1125	1120	1121	315
25°	1016	1025	1027	1028	1028	468
35°	871	880	888	892	893	544
45°	689	699	713	725	728	532
55°	499	511	528	548	550	446
65°	317	329	345	365	372	315
75°	162	174	184	206	207	174
85°	46	49	63	79	84	48
90°	22	27	27	27	21	14
95°	36	54	39	43	15	40
105°	133	149	139	113	77	137
115°	201	209	198	169	134	199
125°	248	244	226	206	180	220
135°	262	268	259	234	212	204
145°	287	288	274	253	238	180
155°	290	290	279	267	258	134
165°	282	282	277	271	269	80
175°	273	274	274	276	276	26
180°	275	275	275	275	275	



TEST NUMBER: ITL68837

CATALOG NUMBER: I2-WL-2N5-1C-UNV-AC48-T1-4-SNL6

**CANDELA DISTRIBUTION (FULL):**

	0°	22.5°	45°	67.5°	90°
0°	1175	1175	1175	1175	1175
2.5°	1179	1178	1176	1169	1167
5°	1173	1173	1171	1165	1164
7.5°	1164	1164	1164	1158	1157
10°	1154	1154	1154	1149	1148
12.5°	1137	1139	1140	1135	1135
15°	1120	1123	1125	1120	1121
17.5°	1097	1102	1104	1104	1101
20°	1074	1078	1083	1079	1079
22.5°	1048	1053	1056	1056	1054
25°	1016	1025	1027	1028	1028
27.5°	985	990	997	997	997
30°	949	958	961	966	962
32.5°	910	919	926	929	930
35°	871	880	888	892	893
37.5°	829	840	845	854	851
40°	785	794	804	811	815
42.5°	738	749	761	771	773
45°	689	699	713	725	728
47.5°	643	655	668	682	687
50°	593	607	618	639	639
52.5°	546	556	573	591	597
55°	499	511	528	548	550
57.5°	451	465	480	504	505
60°	405	416	436	457	458
62.5°	360	372	387	412	413
65°	317	329	345	365	372
67.5°	277	285	304	324	328
70°	237	249	263	286	284
72.5°	199	209	226	244	249
75°	162	174	184	206	207
77.5°	131	138	151	167	171
80°	102	107	120	136	139
82.5°	70	79	87	106	107
85°	46	49	63	79	84
87.5°	22	29	43	57	63
90°	22	27	27	27	21
92.5°	34	38	26	17	5
95°	36	54	39	43	15
97.5°	53	77	67	61	30
100°	81	103	97	79	44
102.5°	107	129	120	98	59
105°	133	149	139	113	77
107.5°	153	166	156	126	92
110°	171	180	172	140	109



TEST NUMBER: ITL68837

CATALOG NUMBER: I2-WL-2N5-1C-UNV-AC48-T1-4-SNL6

**CANDELA DISTRIBUTION (continued):**

	0°	22.5°	45°	67.5°	90°
112.5°	186	194	186	153	121
115°	201	209	198	169	134
117.5°	217	222	206	180	147
120°	230	235	211	190	159
122.5°	242	241	218	198	170
125°	248	244	226	206	180
127.5°	249	247	235	215	189
130°	251	253	247	222	198
132.5°	256	259	254	228	205
135°	262	268	259	234	212
137.5°	270	277	263	239	220
140°	279	284	267	244	226
142.5°	286	286	271	249	233
145°	287	288	274	253	238
147.5°	289	289	277	258	244
150°	289	289	278	261	249
152.5°	290	290	279	264	254
155°	290	290	279	267	258
157.5°	289	288	279	268	261
160°	286	285	279	269	264
162.5°	283	283	278	270	258
165°	282	282	277	271	269
167.5°	280	279	275	272	271
170°	278	276	274	273	274
172.5°	274	274	274	275	275
175°	273	274	274	276	276
177.5°	273	274	275	276	277
180°	275	275	275	275	275

(END OF REPORT)